

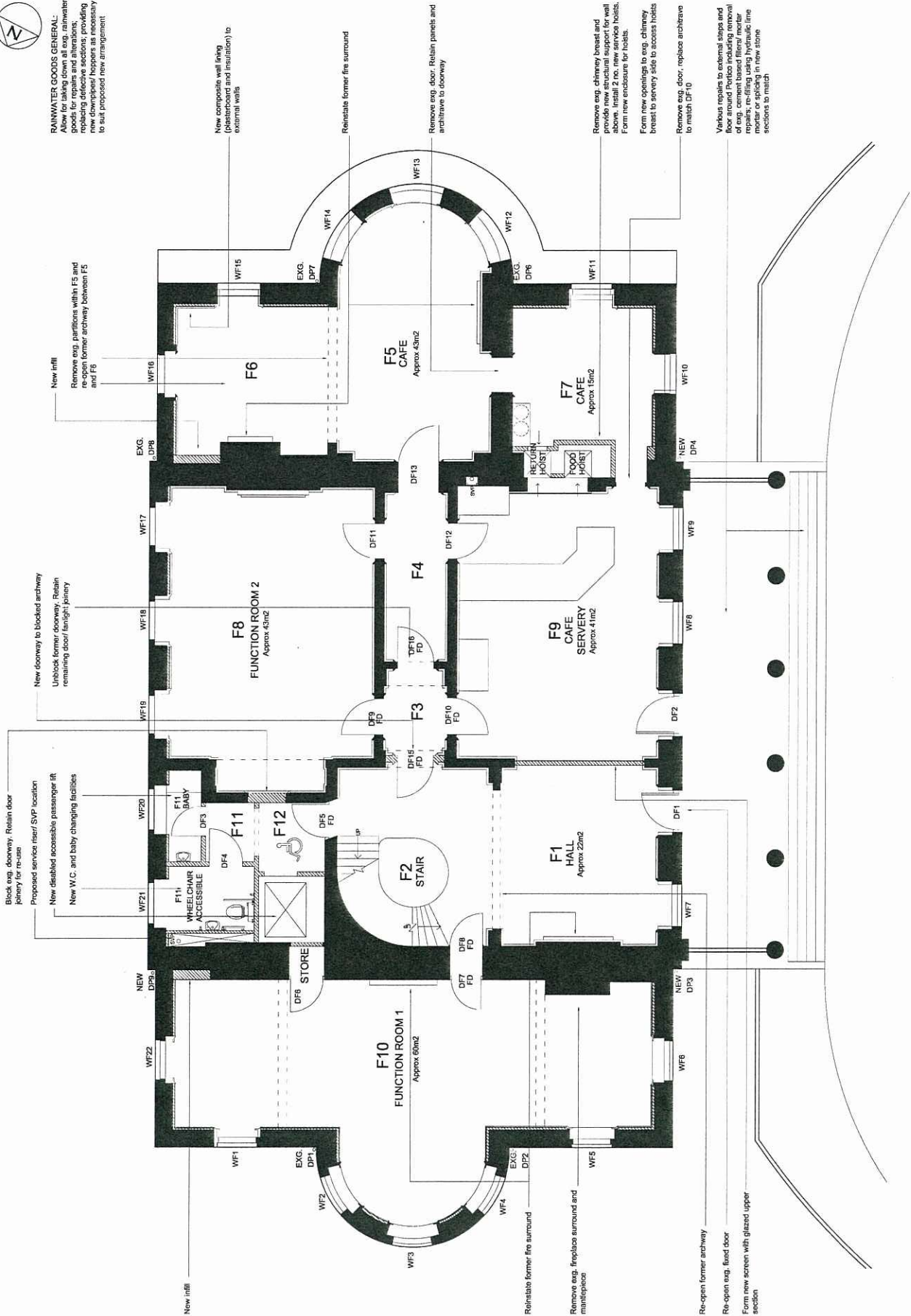
DO NOT SCALE FROM THIS DRAWING

WARNING: THIS DRAWING IS A PRELIMINARY DESIGN AND IS NOT TO BE USED FOR CONSTRUCTION. IT IS THE RESPONSIBILITY OF THE CLIENT TO VERIFY THE ACCURACY OF THE INFORMATION PROVIDED HEREIN. THE ARCHITECT ASSUMES NO LIABILITY FOR ANY ERRORS OR OMISSIONS. THIS DRAWING IS THE PROPERTY OF RICHARD GRIFFITHS ARCHITECTS AND IS NOT TO BE REPRODUCED OR TRANSMITTED IN ANY FORM OR BY ANY MEANS, ELECTRONIC OR MECHANICAL, INCLUDING PHOTOCOPYING, RECORDING, OR BY ANY INFORMATION STORAGE AND RETRIEVAL SYSTEM, WITHOUT THE WRITTEN PERMISSION OF RICHARD GRIFFITHS ARCHITECTS.



**RANWATER GOODS GENERAL:**  
 Allow for taking down all exp. rainwater goods for repairs and alterations; replacing defective sections; providing new downpipes as necessary to suit proposed new arrangement.

FD = proposed fire door  
 WF = New partitions / walls



New composite wall facing (Gypsumboard and insulation) to external walls

Reinstatate former fire surround

Remove exp. door. Retain panels and architrave to doorway

Remove exp. chimney breast and provide new structural support for wall above. Install 2 no. new service hoists. Form new enclosure for hoists.

Form new openings to exp. chimney breast to service side to access hoists

Remove exp. door, replace architrave to match DF10

Various repairs to external steps and floor around Porchco including removal of concrete base and replacement with stone. Install new kerbs, kerbside line mortar or splicing in new stone sections to match

New infill

Remove exp. partitions within F5 and re-open former archway between F5 and F6

New doorway to blocked archway. Unblock former doorway. Retain remaining door/fairlight joinery

Block exp. doorway. Retain door joinery for re-use

Proposed service near SVP location

New disabled accessible passenger lift

New W.C. and baby changing facilities

Block exp. doorway. Retain door joinery for re-use

Proposed service near SVP location

New disabled accessible passenger lift

New W.C. and baby changing facilities

Block exp. doorway. Retain door joinery for re-use

Proposed service near SVP location

New disabled accessible passenger lift

New W.C. and baby changing facilities

Block exp. doorway. Retain door joinery for re-use

Proposed service near SVP location

New disabled accessible passenger lift

New W.C. and baby changing facilities

Block exp. doorway. Retain door joinery for re-use

Proposed service near SVP location

New disabled accessible passenger lift

New W.C. and baby changing facilities

FOR PLANNING

Richard Griffiths Architects  
 1100903 JUN 2008

01 - FIRST FLOOR PLAN  
 SCALE: 1:50 @ A1, 1:100 @ A2